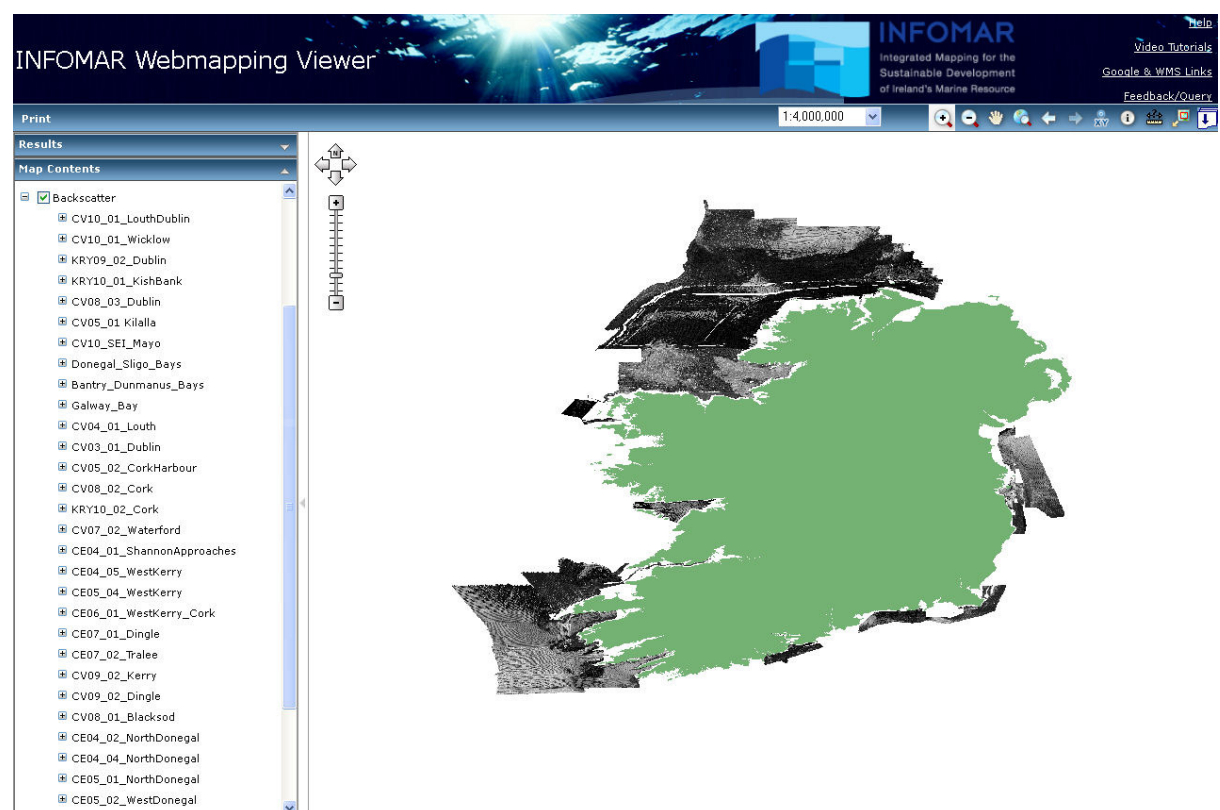


## **Backscatter Data**

Backscatter is acquired using a multibeam sonar instrument. Backscatter is a measurement of the amount of energy returned from the seafloor or the reflectivity measurement. The images show darker areas where the return signal is high and lighter areas where the return signal is low. The amount of backscatter is affected by the nature of the seafloor surface, its composition and density.

### **Important Notes:**

- This layer is comprised of images only there is no attribute data associated with these layers.
- Different seafloor sediments will reflect different amounts of energy, in general harder sediments such as rock will reflect a greater amount of energy than softer seafloor sediments like sand.
- Backscatter is also a function of the angle at which the pulse of energy is reflected from the seafloor which is determined by the seafloor surface roughness. In general flat surfaces will reflect a cleaner stronger signal than angled surfaces.
- To view ISO19115 standard metadata for multibeam data please click [here](#).



## **Full List of Layers (as of 10-11-2011)**

### ☐ Backscatter

- ☐ CV10\_01\_LouthDublin
- ☐ CV10\_01\_Wicklow
- ☐ KRY09\_02\_Dublin
- ☐ KRY10\_01\_KishBank
- ☐ CV08\_03\_Dublin
- ☐ CV05\_01\_Kilalla
- ☐ CV10\_SEI\_Mayo
- ☐ Donegal\_Sligo\_Bays
- ☐ Bantry\_Dunmanus\_Bays
- ☐ Galway\_Bay
- ☐ CV04\_01\_Louth
- ☐ CV03\_01\_Dublin
- ☐ CV05\_02\_CorkHarbour
- ☐ CV08\_02\_Cork
- ☐ KRY10\_02\_Cork
- ☐ CV07\_02\_Waterford
- ☐ CE04\_01\_ShannonApproaches
- ☐ CE04\_05\_WestKerry
- ☐ CE05\_04\_WestKerry
- ☐ CE06\_01\_WestKerry\_Cork
- ☐ CE07\_01\_Dingle
- ☐ CE07\_02\_Tralee
- ☐ CV09\_02\_Kerry
- ☐ CV09\_02\_Dingle
- ☐ CV08\_01\_Blacksod
- ☐ CE04\_02\_NorthDonegal
- ☐ CE04\_04\_NorthDonegal
- ☐ CE05\_01\_NorthDonegal
- ☐ CE05\_02\_WestDonegal
- ☐ CE05\_03\_WestDonegal
- ☐ CE2003\_NorthDonegal
- ☐ CV09\_01\_Shannon
- ☐ CV09\_02\_Tralee
- ☐ CV09\_03\_Wexford
- ☐ CV09\_CodlingDeep
- ☐ CV09\_05\_UCC\_EastCoast

Backscatter images from all areas surveyed in depths of 200m or less.

Each image is named according to its SurveyName\_Location. If the image is a merge of several surveys it will just be called according to the Location.

[www.infomar.ie](http://www.infomar.ie)

[Geological Survey of Ireland Data Deliver System](#)

