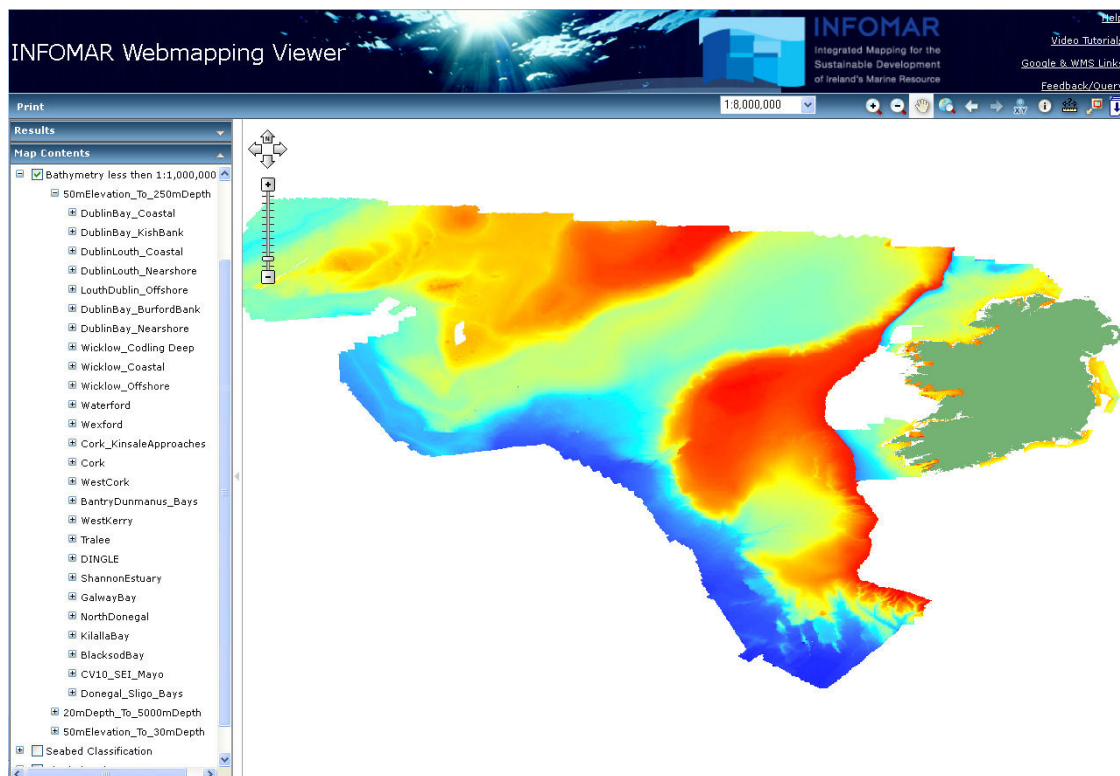


Bathymetry Grids

Bathymetry is another name for the water depth. In this map viewer there are 2 different bathymetry layers, the Bathymetry greater than 1:1,000,000 and the Bathymetry less than 1:1,000,000 layers. The former is displayed when zoomed out beyond 1:1,000,000 and the latter is displayed when zoomed in beyond 1:1,000,000.

Important Notes

- All measurements are in meters.
- Both Pixel Value and Water_Depth fields are the bathymetry value for that point.
- Bathymetry values given have been reduced to Lowest Astronomical tide please click [here](#) to see details of how this is carried out.
- In some areas there are elevation values above the water level onto land areas, these are derived from LiDAR surveys which map across the offshore/onshore boundary.
- If a value of NoData is shown when you click on a location using the (i) tool it maybe that the raster is overlapped by a transparent blank area of another raster, move the cursor over the NoData text, a new down arrow will appear, click this to see the other grids available for this location and you will see the relevant water depth.
- The colours shown in the colour scale are always set to be blue in the deeper areas to red/orange in the shallow/onshore areas. The colours are always stretched from 50m to -250m depths for the nearshore layers, and 135m to 5000m depths for the offshore areas.
- To view ISO19115 standard metadata for multibeam data please click [here](#).



Full List of Layer (as of 13-10-2011)

☐ Bathymetry greater then 1:1,000,000

☐ 50mElevation_to_4942mDepth

☒ Bathymetry less then 1:1,000,000

☐ 50mElevation_To_250mDepth

☐ DublinBay_Coastal

☐ DublinBay_KishBank

☐ DublinLouth_Coastal

☐ DublinLouth_Nearshore

☐ LouthDublin_Offshore

☐ DublinBay_BurfordBank

☐ DublinBay_Nearshore

☐ Wicklow_Codling Deep

☐ Wicklow_Coastal

☐ Wicklow_Offshore

☐ Waterford

☐ Wexford

☐ Cork_KinsaleApproaches

☐ Cork

☐ WestCork

☐ BantryDunmanus_Bays

☐ WestKerry

☐ Tralee

☐ DINGLE

☐ ShannonEstuary

☐ GalwayBay

☐ NorthDonegal

☐ KilallaBay

☐ BlacksodBay

☐ CV10_SEI_Mayo

☐ Donegal_Sligo_Bays

☐ 20mDepth_To_5000mDepth

☐ 50mElevation_To_30mDepth

Coarse grid of all data collected from INFOMAR and INSS.

This layer shows bathymetry grids of all data collected from INFOMAR and INSS between 50m land elevation to 250m water depth.

☒ Bathymetry less than 1:1,000,000

☒ 50mElevation_To_250mDepth

☒ 20mDepth_To_5000mDepth

☒ Rockall_Bank

☒ Abyssal_Plain

☒ Continental_Shelf

☒ 50mElevation_To_30mDepth

This layer shows bathymetry grids of all data collected from INFOMAR and INSS between 20m water depth to 5000m water depth.

☒ Bathymetry less than 1:1,000,000

☒ 50mElevation_To_250mDepth

☒ 20mDepth_To_5000mDepth

☒ 50mElevation_To_30mDepth

☒ LiDAR_2003_2005

☒ LiDAR_2006

☒ LiDAR_2008

☒ LiDAR_2010

☒ Li10_MulroyBay

Grid of data collected from LiDAR surveys, these are surveys from very 50m land elevation to 30m water depth.

Please Note: the map content presented is based on data available to the GSI and the MI at the time of compilation. The accuracy of the data used, or interpolations made, is neither stated nor implied. Evaluation of specific sites will normally require further and more detailed assessments and will frequently require site investigations. Finally this data is not to be used for navigation.

www.infomar.ie

[Geological Survey of Ireland Data Deliver System](#)

