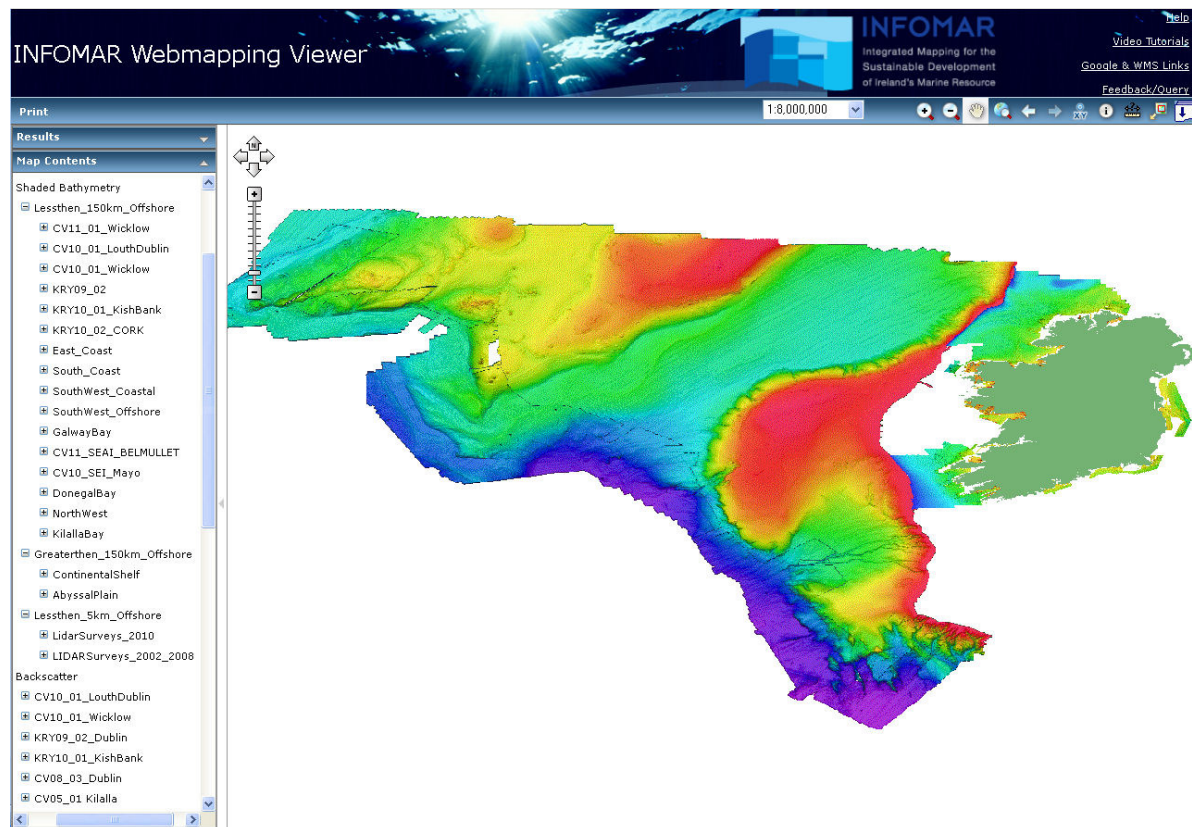


Shaded Relief Images

Shaded relief images can also be called bathymetry sun illuminated images. These images are created by making a 3d terrain model of the bathymetry data, using specialised software, the sun is then artificially placed at a set height and angle over the terrain model to create light and shaded areas on the seafloor where features occur. This is useful for highlighting any features such as rocky outcrops, sand banks etc.

Important Notes:

- This layer is comprised of images only there is no attribute data associated with these layers.
- All of the images have been created by using the following shading parameters; the sun placed to the North West of the terrain (315 degrees) at an angle of between 20 to 30 degrees height above the terrain.



Full List of Layers for Shaded Bathymetry (as of 11-10-2011)

- ☒ Shaded Bathymetry
 - ☐ Lessthen_150km_Offshore
 - ☐ CV11_01_Wicklow
 - ☐ CV10_01_LouthDublin
 - ☐ CV10_01_Wicklow
 - ☐ KRY09_02
 - ☐ KRY10_01_KishBank
 - ☐ KRY10_02_CORK
 - ☐ East_Coast
 - ☐ South_Coast
 - ☐ SouthWest_Coastal
 - ☐ SouthWest_Offshore
 - ☐ GalwayBay
 - ☐ CV11_SEAI_BELMULLET
 - ☐ CV10_SEI_Mayo
 - ☐ DonegalBay
 - ☐ NorthWest
 - ☐ KilallaBay
 - ☐ Greaterthan_150km_Offshore
 - ☐ ContinentalShelf
 - ☐ AbyssalPlain
 - ☐ Lessthen_5km_Offshore
 - ☐ LidarSurveys_2010
 - ☐ LIDARSurveys_2002_2008

Shaded Relief images from surveys carried out in waters within 150km of the Irish coast.

Shaded relief images from surveys carried out in waters beyond 150km of the Irish coast out to the Continental Shelf and the Abyssal Plain.

Shaded Relief images from LiDAR surveys, these are surveys from very nearshore to onshore areas.

www.infomar.ie
[Geological Survey of Ireland Data Deliver System](#)

